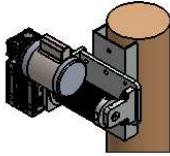
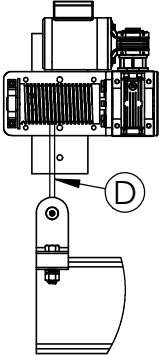
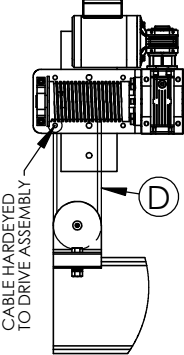
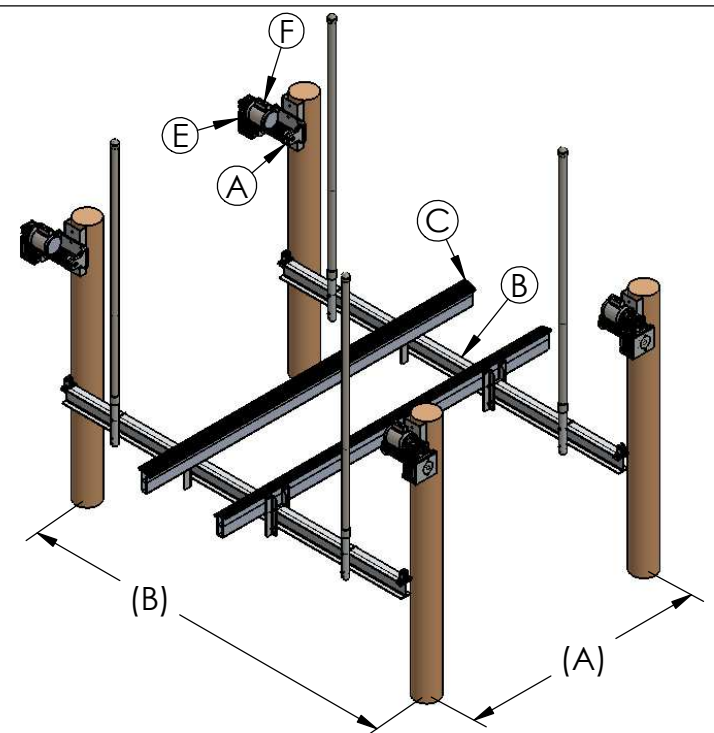


MOUNTING OPTIONS:		CABLE ROUTING:	
SIDE MOUNT 7K-16K LIFTS		SINGLE PULL 7K LIFTS	DOUBLE PULL 10K-16K LIFTS
			
MOUNT HARDWARE: 5/8" STAINLESS STEEL *THRU BOLTED* LENGTH DETERMINED BY CONTRACTOR		CABLE HARDEYED TO DRIVE ASSEMBLY	
Beamless Lifts	(A) Bow to Stern (Center To Center)	(B) Port To Starboard (Center To Center)	
7,000 lb.	8 ft min. 10 ft max.	12 ft 6 in	
10,000 lb.		14 ft	
16,000 lb.			



NOTE: LOAD SHOULD BE EVENLY DISTRIBUTED BY POSITIONING THE CENTER OF GRAVITY DIRECTLY IN THE CENTER OF THE LIFTING BEAMS AS SHOWN IN THE ILLUSTRATION ABOVE.

IT IS THE RESPONSIBILITY OF THE CUSTOMER/CONTRACTOR TO DETERMINE THE PROPER PILING SIZE AND HEIGHT FOR THE LIFT BASED ON: CAPACITY, TRAVEL, LOCATION OF DRIVES, ETC. LIFT MUST USE MINIMUM PILING SIZE AND SPACING AS LISTED IN THIS SHEET.

BEAMLESS LIFT SPECIFICATION SHEET

2023	TOP BEAM (A)	CRADLE BEAM (B)	BUNKS (C)	CABLE SIZE (D)	CABLE CONFIGURATION	DRIVE (E)	H.P. MOTOR (F)	MINIMUM PILING (SIZE & QTY.)	TRAVEL
7,000 LB.	SPOOL ASSEMBLY	4" X 6" X 12' 6"	8" ALUM	5/16" SS 7/19 (.313") 20FT W/ HARDEYE	SINGLE PULL	DIRECT DRIVE	3/4 H.P. (QTY. 4) 220V 4.9A EACH	10" (QTY. 4)	12 FT
10,000 LB.		5" X 8" X 12' 6"		5/16" SS 7/19 (.313") 35FT W/ HARDEYE					DOUBLE PULL
16,000 LB.		6" X 10" X 14'	10" ALUM						

TITLE:
**7K-16K BEAMLESS LIFT
ENGINEERING SHEET**

PH: 800-325-1116
FAX: 252-747-4377
TIDETAMER.COM
P.O. BOX 1118
SNOW HILL, NC 28580

**PROPRIETARY AND
CONFIDENTIAL**

THE INFORMATION CONTAINED IN
THIS DRAWING IS THE SOLE
PROPERTY OF TIDE TAMER
INDUSTRIES. ANY REPRODUCTION IN
PART OR AS A WHOLE WITHOUT THE
WRITTEN PERMISSION OF TIDE TAMER
INDUSTRIES IS PROHIBITED.

ENGINEERS SEAL

SIZE **A** DWG. NO. ENGINEERING REV

SCALE: AS NOTED DRAWN BY: ACC DATE: 3-8-2023 SHEET 1 OF 1