

# Lighthouse

## Power Pedestal

One of our most popular units, the all-purpose Lighthouse pedestal has a wide range of features. With units in service around the world, this stylish power pedestal is recognized for its practicality and exceptional durability.



Above:  
Lighthouse Power Pedestals,  
Cordova Marina, Alaska



# Lighthouse Power Pedestal

- Standard Features
- Available Options
- Dimensions

### Receptacle Configurations

For a complete listing of the receptacle configurations available for the Lighthouse power pedestal, see page 19.

### Standard Features

- Photocell Controlled 13 Watt Fluorescent Light (Clear Lens or Amber Lens for Bug Reduction)
- Lockable Weatherproof Doors which Protect Breakers and Receptacles while in use (a requirement of N.F.P.A. 303 and NEC Art. 555)
- Hose and Cable Brackets
- Heavy Polycarbonate Housing with a Two-Part Polyurethane Coating for a UV Resistant, Long Lasting Finish
- Single or Dual Phone and/or Cable TV Connections
- Copper Bus Bar with Ratings from 250 to 500 Amps
- Hinged Base Providing Easy Access for both Installation and Maintenance
- Single or Dual Steel 1/4 Turn Ball Valves with 3/4" Hose Bibs and Stainless Steel Handles
- Backlit Faceplate for Easy Receptacle Plug-in at Night

### Available Options

- Digital Electronic Metering (One, Two or Three Element Meters Available)
- Built in Meter Socket
- 20A /125V GFI Receptacle (Max of 2 GFI Receptacles per Pedestal)\*
- High-Speed Internet Connections
- Radio Transmission of Meter Output

\* 20 Amp GFI receptacles are not to be used for shore power.

### Dimensions

| LIGHTHOUSE | IN.   |        |
|------------|-------|--------|
|            | MM    |        |
| Height:    | 44    | 1117.6 |
| Width:     | 13.75 | 349.25 |
| Depth:     | 13.75 | 349.25 |

Cable & Internet Connections



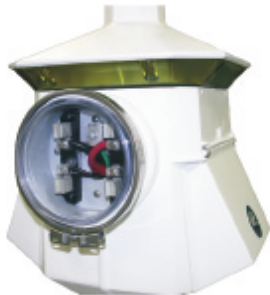
Bus Bar

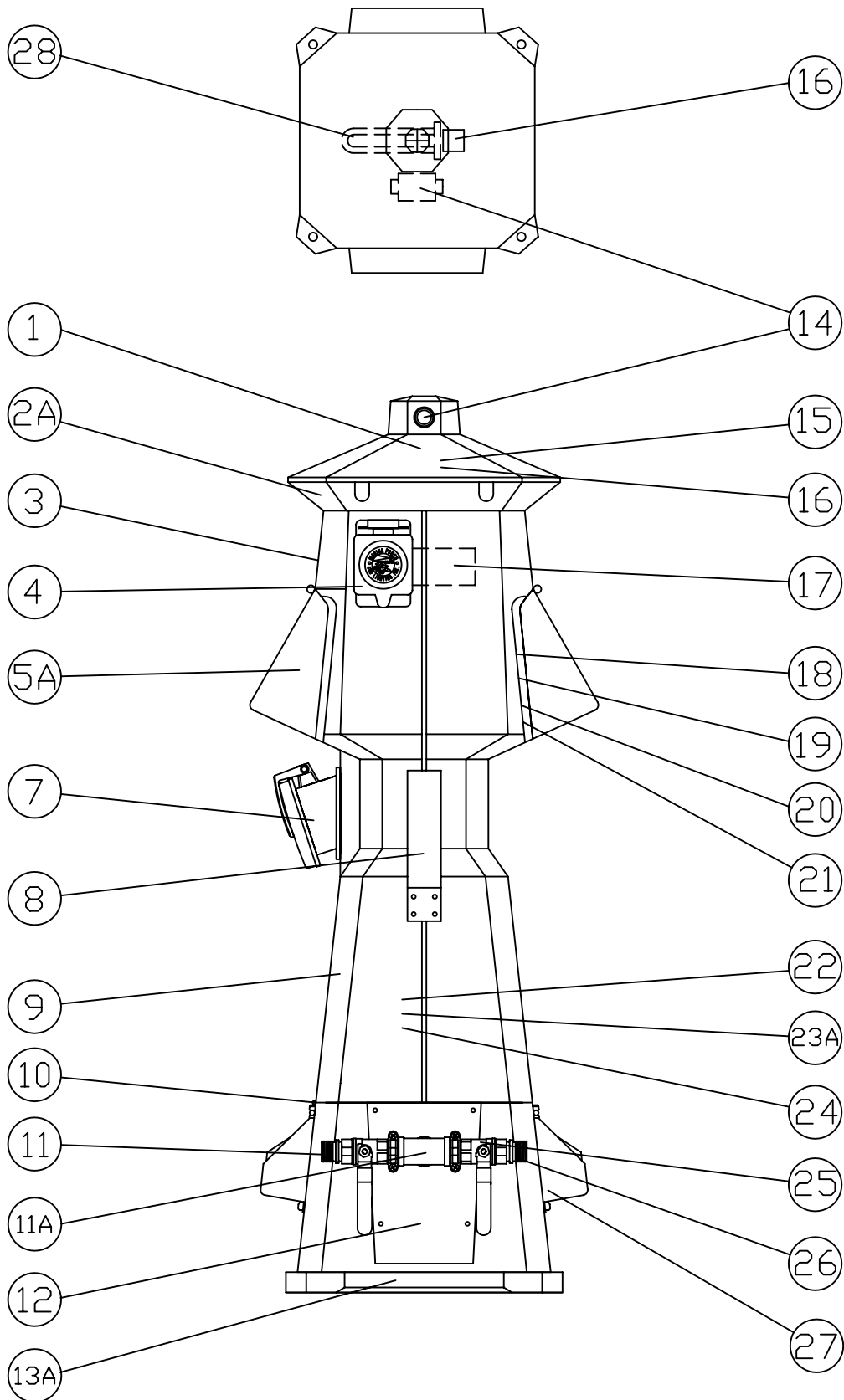


Hinged Base



Optional Meter Socket





MARINA POWER &  
LIGHTING, INC.

DATE: 5/16/05

FILE: Lighthouse - parts.dwg

PRODUCT:  
LIGHTHOUSE

PARTS DIAGRAM



## PARTS LISTS

| #   | Part                         |
|-----|------------------------------|
| 1   | Top - Only                   |
| 2A  | Amber Lens                   |
| 2B  | Amber Lens - 3 Piece         |
| 3   | Counter                      |
| 4   | External Cover               |
| 5A  | Door                         |
| 5B  | Door - Newport               |
| 5C  | Door - Stainless Steel       |
| 6   | 100A Breaker Cover           |
| 7   | 100A Receptacle              |
| 8   | Hose & Cable Brackets        |
| 9   | Main Housing - Complete      |
| 9B  | Stainless Steel Door         |
| 10  | Aluminum Hinge               |
| 11  | Hose Adapter                 |
| 11A | Water Assembly - Complete    |
| 12  | Water Mounting Plate         |
| 13A | Pedestal Base w/ Buss Bars   |
| 13B | Pedestal Base w/o Buss Bars  |
| 14  | Photocell                    |
| 15  | Ballast                      |
| 16  | Socket                       |
| 17  | Meter                        |
| 18  | Face Plate - Amber Lexan     |
| 19  | Receptacle                   |
| 20  | Breaker Plate - Noryl Molded |
| 21  | Breaker                      |
| 22  | Terminal Barrier Isolators   |
| 23A | Copper Buss Bar              |
| 23B | Copper Buss Bar              |
| 24  | Wire Terminations            |
| 25  | 3/4" Ball Valve              |
| 26  | Backflow Preventer           |
| 27  | Phone/Cable TV Assembly      |

| #   | Part                           |
|-----|--------------------------------|
| 28  | Bulb                           |
| 29  | 1/2" Silcock                   |
| 30  | Wiring (per foot)              |
| 31  | Stainless Steel Screws         |
| 32  | Light Fuse                     |
| 33  | Fuse Holder                    |
| 34  | Touch-up Paint Kit             |
| 35  | Aluminum Face Plate            |
| 36  | Buss Bar Assembly              |
| 37  | Main Housing - Complete        |
| 38  | Stainless Steel Mounting Stand |
| 38  | Aluminum Mounting Stand        |
| 39A | Phone Shield                   |
| 39B | Phone/Cable Conduit            |
| 40A | Conduit Male Adapter           |
| 40B | Male Coupling                  |
| 41  | Newport Mounting Brackets      |
| 42  | Pedestal Main Housing          |
| 43  | Mounting Feet                  |
| 44  | Red Strobe Light               |
| 45  | Firehouse Top w/ Strobe Light  |
| 46  | Clear Door                     |
| 47  | Life Ring                      |
| 48  | Blank Access Panel             |
| 49  | Door / Life Ring Trigger       |
| 50  | Firehouse Buss Bar             |
| 51  | Clear Door Hasp                |
| 52  | Life Ring Bracket              |
| 53  | Fire Extinguisher              |
| 54  | RV Phone & Cable TV Assembly   |
| 55  | Power Tower Light Switch       |
| 56  | Stainless Steel Access Panel   |

## **All Power Pedestals Must Meet the Following:**

### **Part I. General:**

#### **1.1 General Requirements**

- A. Shall be tested and certified to be in compliance with ANSI/UL® 231 entitled "power outlets."
- B. If a laboratory other than UL is used, that laboratory must certify, in writing, that the power outlet has been tested and meets all of the requirements of ANSI/UL 231, including 746C polymeric materials, and that the unit will pass the 94VO-5V flame test.
- C. Shall be certified to meet all sections of NFPA® 303, Fire Protection Standards for Marinas and Boatyards – 2006 Edition.
- D. Shall meet 406.8 (B)(2)(a) of the National Electrical Code NFPA 70, i.e., "A receptacle installed in a wet location shall be installed in a weatherproof enclosure, the integrity of which is not affected when the attachment plug cap is inserted."
- E. The receptacles shall be mounted at a down angle of 35 degrees or greater from vertical to relieve the strain of the cable weight on the receptacle locking mechanism.

### **Part II. Products:**

#### **2.1 Acceptable Manufacturers — Power Pedestals/ Lighthouse Enclosures**

- A. Eaton Corporation  
Marina Power and Lighting  
149 Warwick Court  
Williamsburg, VA 23185  
Toll Free 1-800-723-8009

#### **2.2 Power Pedestals/Lighthouse Enclosures — General**

- A. Housing:
  - 1. The housing shall be constructed of 1/4" thick injection molded resin material and shall be coated with a UV-resistant polyurethane. It shall be UL listed as a type 3R weatherproof enclosure.
- B. Wiring:
  - 1. The power pedestal shall be completely pre-wired at the factory to the load side of the compression lug assembly.
  - 2. All load copper wiring shall be of high stranding and tin-plated to resist corrosion.
  - 3. The maximum size of the line wiring shall be 350 MCM direct feed or #4/0 AWG loop feed.

#### **C. Loop Feed Bus Bar System:**

- 1. The bus system shall be a 3/8" – 16 silicon-bronze stud with a silicon-bronze Belleville type washer. The 3/8" – 16 silicon-bronze hex-nut shall be torqued to 200 inch-pounds.
- 2. Double Barrel Mechanical Lugs (Optional) — rated for copper and aluminum are available.

#### **D. Grounding:**

- 1. All exposed metallic parts must have an integral ground that is a part of the equipment grounding system.

#### **E. Receptacles:**

- 1. All receptacles shall be of the corrosion resistant type conforming to NEMA® L – 5 and/or NEMA L – 6 requirements and are rated for marine use. 100 amp receptacles should conform to IEC and CEE standards.
- 2. All receptacles shall be mounted at an angle that is a minimum 35 degrees from vertical and located behind a lockable weatherproof hinged door that is under tension to ensure proper closing pressure when the receptacle is or is not in use.
- 3. All receptacles shall be mounted at least 30" above the dock.

#### **F. Circuit Breakers:**

- 1. All breakers for receptacles shall be of the thermal-magnetic type, 10,000 AIC, and shall be UL listed.
- 2. Circuit breakers for the receptacles shall be covered with the same lockable door that covers the receptacles.

#### **2.3 Power Pedestals**

##### **A. Base:**

- 1. The base shall be hinged to the upper unit to provide ease of wiring and plumbing and shall be of injection molded resin material construction with mounting feet that are 3/4" in thickness.

##### **B. Hose/Cable Bracket:**

- 1. Each pedestal shall have brackets capable of holding a 50' length of 5/8" water hose or 50' of 50 amp 4 conductor boat S.O. cord.

##### **C. Receptacles:**

- 1. Receptacles for boat users shall be a locking and grounding type, either single-phase, 125 volt 30 and/or 50 amps, and 125/250 volt 50 and/or 100 amps. Three-phase 120/208 volt 100 amp or three-phase 480 delta or wye 100 amps.

##### **D. Lighting:**

- 1. Each pedestal shall be equipped with a non-metered light. The light shall be a 13 watt fluorescent biaxial light that is controlled by an electromechanical photocell.
- 2. The light shall provide 360 degree dock illumination such that indirect lighting extends from station to station with a minimum dock lighting of one foot candle at 15 feet. The lighting shall not interfere with boaters' navigation.



Eaton Electrical Inc.  
1000 Cherrington Parkway  
Moon Township, PA 15108  
United States  
tel: 1-800-525-2000  
www.EatonElectrical.com

## **General Specifications for the Lighthouse Power Pedestal**

Page 2

### **E. Circuit Breakers:**

1. Circuit breakers for 30 amp receptacles shall be a single-pole, 125 volt, 30 amp thermo-magnetic type.
2. Circuit breakers for 50 amp receptacles shall be single-pole 125 volt 50 amp or two-pole 125/250 volt, 50 amp thermo-magnetic type.

### **F. Metering (Optional):**

1. The pedestal shall be equipped with fully electronic meters that display the kilowatt-hours used at each slip on a non-resettable digital counter that is protected from the weather. The accuracy of the meters must be certified by the manufacturer to have a 125 ampere rating and no more than a two percent error when tested in accordance with ANSI-C12.1. (California requires 1%.)

### **G. Telephone and Cable TV (Optional):**

1. Each pedestal shall be equipped with one or two outlets for each slip. Each outlet shall contain a marine telephone locking receptacle and one (1) male cable TV connector under a weatherproof cover.

### **H. Water (Optional):**

1. The water connection shall be one (1) 3/4" inlet, which divides into two (2) 3/4" hose bibs. The valves shall be 1/4 turn ball valves.

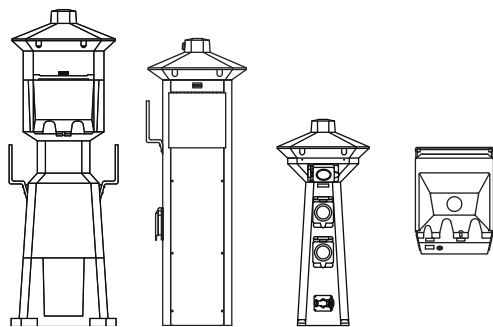
### **I. Power Pedestals for A.D.A Slips (Designated as Handicap Accessible):**

1. Power pedestals installed on designated handicap accessible slips shall comply with the guidelines of the Americans With Disabilities Act of 1990.

UL is a registered trademark of Underwriters Laboratories Inc. NFPA is a registered trademark of the National Fire Protection Association. National Electrical Code and NEC are registered trademarks of the National Fire Protection Association, Quincy, Mass. NEMA is the registered trademark and service mark of the National Electrical Manufacturers Association.

© 2006 Eaton Corporation  
All Rights Reserved  
Printed in USA  
Publication No. PS0060005E / Z4977  
October 2006

# Receptacle Configuration Chart



## SHORE POWER RECEPTACLES

**Note:**

- Receptacle configuration is not available for this power pedestal.

\* 20 Amp GFI receptacles are not to be used for shore power.

| Side One<br>Power Outlets | Side Two<br>Power Outlets | Phase | Lighthouse<br>Maximum GFI* | Lighthouse-SS<br>Maximum GFI* | Hatteras Light<br>Maximum GFI* | Newport<br>Harbor Mate<br>Maximum GFI* |
|---------------------------|---------------------------|-------|----------------------------|-------------------------------|--------------------------------|--|
| None                      | None                      | 1     | 2                          | 2                             | 3                              | 3                                      |
| 30                        | 00                        | 1     | 2                          | 2                             | 2                              | 2                                      |
| 30                        | 30                        | 1     | 2                          | 2                             | 1                              | 1                                      |
| 30-30                     | 30                        | 1     | 2                          | 2                             | •                              | •                                      |
| 30-30                     | 30-30                     | 1     | 2                          | 2                             | •                              | •                                      |
| 30                        | 50                        | 1     | 2                          | 2                             | 0                              | 1                                      |
| 30-30                     | 50                        | 1     | 2                          | 2                             | •                              | •                                      |
| 30-30                     | 30-50                     | 1     | 2                          | 2                             | •                              | •                                      |
| 30-30                     | 50-50                     | 1     | 2                          | 2                             | •                              | •                                      |
| 30-50                     | 30-50                     | 1     | 2                          | 2                             | •                              | •                                      |
| 30-50                     | 50-50                     | 1     | 2                          | 2                             | •                              | •                                      |
| 50                        | None                      | 1     | 2                          | 2                             | 1                              | 2                                      |
| 50                        | 50                        | 1     | 2                          | 2                             | •                              | 1                                      |
| 50-50                     | 50                        | 1     | 2                          | 2                             | •                              | •                                      |
| 50-50                     | 50-50                     | 1     | 2                          | 2                             | •                              | •                                      |
| 100                       | None                      | 1     | 2                          | 2                             | •                              | •                                      |
| 100                       | 50                        | 1     | 2                          | 2                             | •                              | •                                      |
| 100                       | 50-50                     | 1     | 2                          | 2                             | •                              | •                                      |
| 100                       | 100                       | 1     | 2                          | 2                             | •                              | •                                      |
| 100                       | None                      | 3     | 2                          | 2                             | •                              | •                                      |
| 100                       | 50-50                     | 3     | 2                          | 2                             | •                              | •                                      |
| 100                       | 100                       | 3     | 2                          | 2                             | •                              | •                                      |

**Right:**  
Lighthouse Power Pedestal

