

NOTE: LOAD SHOULD BE EVENLY DISTRIBUTED BY POSITIONING THE CENTER OF GRAVITY DIRECTLY IN THE CENTER OF THE LIFTING BEAMS AS SHOWN IN THE ILLUSTRATION ABOVE.

**BOAT HOUSE SPECIFICATION SHEET**

2023	TOP BEAM (A)	CRADLE BEAM (B)	BUNKS (C)	CABLE SIZE (D)	CABLE CONIGURATION	DRIVE (E)	H.P. MOTOR (F)
8K DUAL MOTOR	4" X 6" X 12' 6"	4" X 6" X 10'	8" ALUM 10FT	5/16" SS 7/19(.313) 20FT W/ HARDEYE	SINGLE PULL	DIRECT DRIVE	1 H.P. (QTY 2) 220V 6.8A EACH
10K DUAL MOTOR		5" X 8" X 10'		5/16" SS 7/19(.313) 35FT W/ HARDEYE	DOUBLE PULL		
12K DUAL MOTOR							

PH: 800-325-1116  
 FAX: 252-747-4377  
 TIDETAMER.COM  
 P.O. BOX 1118  
 SNOW HILL, NC 28580

**PROPRIETARY AND CONFIDENTIAL**

THE INFORMATION CONTAINED IN THIS DRAWING IS THE SOLE PROPERTY OF TIDE TAMER INDUSTRIES. ANY REPRODUCTION IN PART OR AS A WHOLE WITHOUT THE WRITTEN PERMISSION OF TIDE TAMER INDUSTRIES IS PROHIBITED.

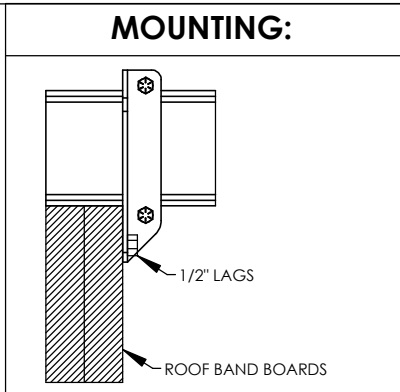
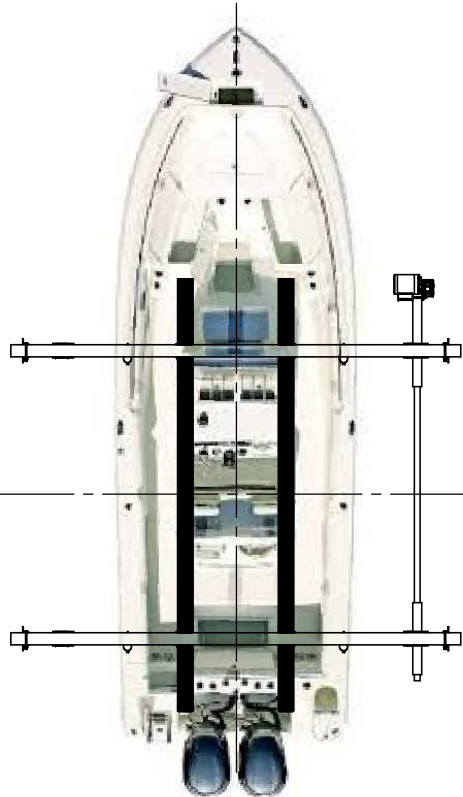
UNLESS OTHERWISE SPECIFIED:  
 DIMENSIONS ARE IN INCHES  
 TOLERANCES:  
 FRACTIONAL ±  
 ANGULAR: MACH ± BEND ±  
 TWO PLACE DECIMAL ±  
 THREE PLACE DECIMAL ±

DO NOT SCALE DRAWING

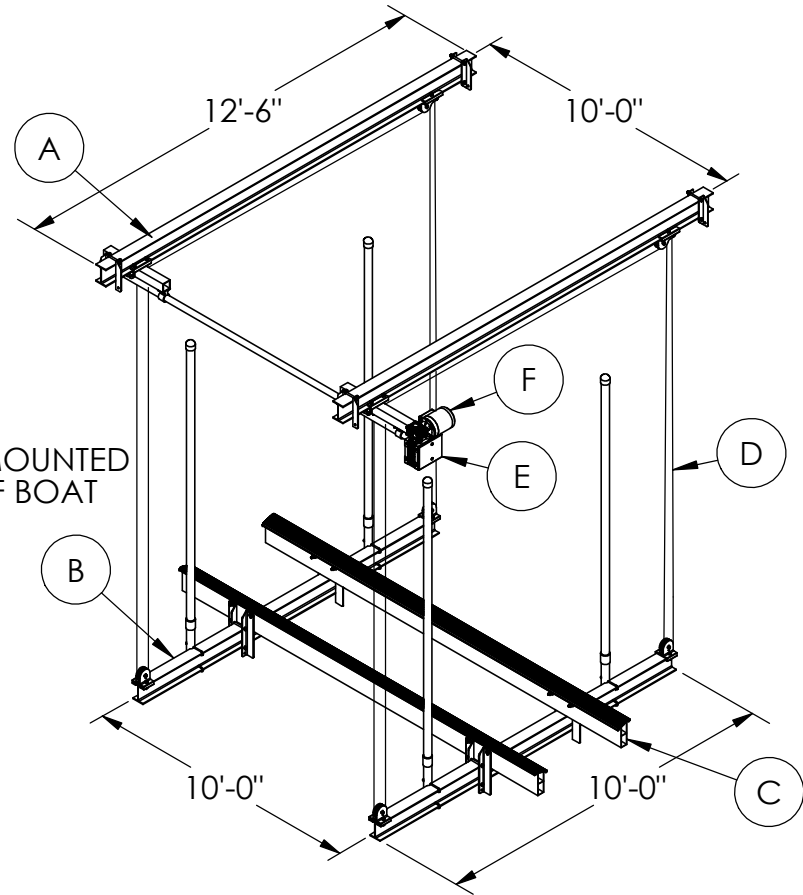
	NAME	DATE
DRAWN	ACC	3-9-23
CHECKED		
ENG APPR.		

COMMENTS:

TITLE: <b>DUAL MOTOR BOAT HOUSE LIFT SPEC SHEET</b>		
SIZE <b>A</b>	DWG. NO. <b>ENGINEERING</b>	REV
SCALE: AS NOTED		SHEET 1 OF 2



DRIVE PIPE CAN BE MOUNTED ON RIGHT OR LEFT OF BOAT



NOTE: LOAD SHOULD BE EVENLY DISTRIBUTED BY POSITIONING THE CENTER OF GRAVITY DIRECTLY IN THE CENTER OF THE LIFTING BEAMS AS SHOWN IN THE ILLUSTRATION ABOVE.

**BOAT HOUSE SPECIFICATION SHEET**

2023	TOP BEAM (A)	CRADLE BEAM (B)	BUNKS (C)	CABLE SIZE (D)	CABLE CONIGURATION	DRIVE (E)	H.P. MOTOR (F)
8K SINGLE MOTOR	4" X 6" X 12' 6"	4" X 6" X 10'	8" ALUM 10FT	1/4" SS 7/19(.25) 92FT	DOUBLE PULL	DIRECT DRIVE	1 H.P. (QTY 1) 220V 6.8A EACH


 PH: 800-325-1116  
 FAX: 252-747-4377  
 TIDETAMER.COM  
 P.O. BOX 1118  
 SNOW HILL, NC 28580

**PROPRIETARY AND CONFIDENTIAL**

THE INFORMATION CONTAINED IN THIS DRAWING IS THE SOLE PROPERTY OF TIDE TAMER INDUSTRIES. ANY REPRODUCTION IN PART OR AS A WHOLE WITHOUT THE WRITTEN PERMISSION OF TIDE TAMER INDUSTRIES IS PROHIBITED.

UNLESS OTHERWISE SPECIFIED:  
 DIMENSIONS ARE IN INCHES  
 TOLERANCES:  
 FRACTIONAL ±  
 ANGULAR: MACH ± BEND ±  
 TWO PLACE DECIMAL ±  
 THREE PLACE DECIMAL ±

DO NOT SCALE DRAWING

	NAME	DATE
DRAWN	ACC	3-9-23
CHECKED		
ENG APPR.		

COMMENTS:

TITLE: **SINGLE MOTOR  
BOAT HOUSE LIFT  
SPEC SHEET**

SIZE	DWG. NO.	REV
<b>A</b>	<b>ENGINEERING</b>	

SCALE: AS NOTED SHEET 2 OF 2