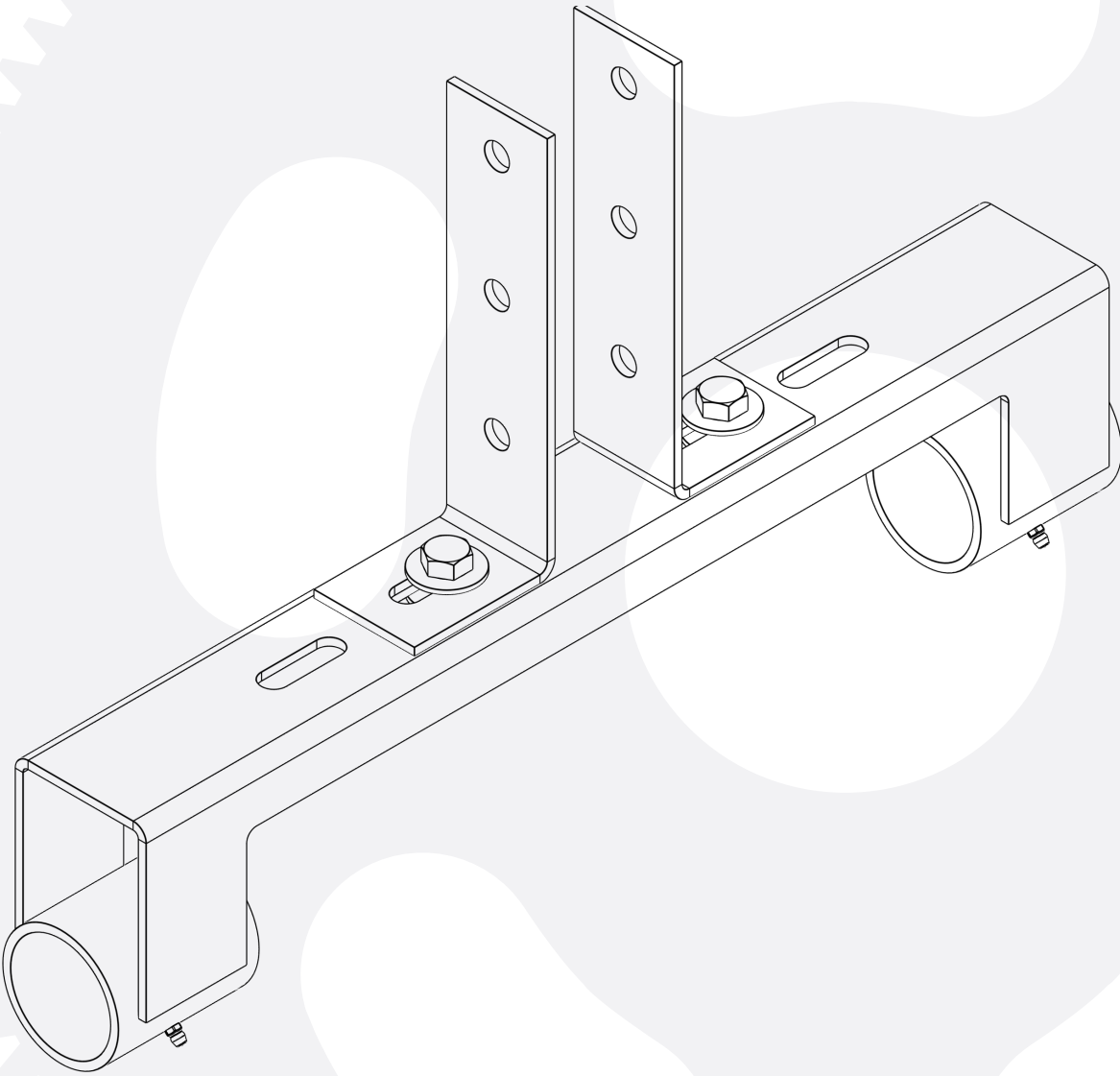




BH-USA
EVERYTHING FOR YOUR DOCK & PIER



DUAL PIPE SUPPORT

TECHNICAL GUIDE

09425-RV1 8/2021

MUST READ BEFORE USE

- ▶ **Must follow proper usages as outlined in BH-USA overhead lift guide.**
- ▶ **Always use full wet-weight of boat and include cradle when determining boat weight.**
- ▶ **Never attempt side mount for boat weighing more than 4,000 lbs. Without compounding.**
- ▶ **Rating based on straight line pull, compounding cable with increase rating.**
- ▶ **Do not stand in the boat while boat is on lift, never "ride" the lift.**
- ▶ **Always place a support between first lifting point and hoist.**
- ▶ **Must be over 18 years of age to operate any boat lift.**
- ▶ **Are your cables the right size for your boat? Check the BH-USA cable guide.**
- ▶ **Lifting a wakeboard boat? Always compound your cables.**
- ▶ **When calculating your weight... Remember the weight of the cradle.**
- ▶ **Never lift a boat more than two feet above the water.**

BH-USA assumes no responsibility or liability for installations and/or improper use of the equipment. This guide is intended to be used as a reference and general guideline only. **BH-USA** is not responsible for the design, construction or installation of docks, piers or lifts.

WHILE EVERY CARE HAS BEEN TAKEN TO AVOID MISTAKES, **BH-USA** WILL NOT ACCEPT LIABILITY FOR ANY ERRORS, MISPRINTS, TYPOGRAPHICAL ERRORS, OMISSIONS OR MISINTERPRETATIONS OF THE BH-USA OVERHEAD LIFT GUIDE - THE **BH-USA** EQUIPMENT GUIDE.

The following Terms and Conditions of Sale (“Terms and Conditions”) are applicable to all goods and services of any kind sold by Boat Hoist USA, Inc. (“BH-USA”) to Customer.

1. Entire Agreement. These Terms and Conditions shall constitute the entire agreement between BH-USA and Customer and shall supersede all prior negotiations, statements, representations or agreements, whether oral or written, with respect to the sale of goods or services by BH-USA. The sale of goods or services by BH-USA is expressly conditioned upon Customer’s acceptance of and assent to these Terms and Conditions. BH-USA hereby gives notice that it rejects any terms or conditions contained in any document which has been or may in the future be supplied by Customer to BH-USA, whether such terms or conditions are set forth in Customer’s purchase order or otherwise. Unless authorized by an executive officer of BH-USA in writing, no change or modification of these Terms and Conditions will be effective.

2. Prices. BH-USA reserves the right to change prices of its products. BH-USA reserves the right to sell products to marine contractors at negotiated prices.

3. Taxes. Any tax or other government charge now or hereafter levied upon the sale, use or shipment of goods and/or services ordered by Customer shall be paid by Customer.

4. Invoices and Payments. All invoices are payable at BH-USA’s office in Longview, Texas and must be paid according to the terms specified in each invoice. If Customer fails to pay any invoice according to its terms, then BH-USA may defer further shipments of goods to Customer until such payments are made, or BH-USA may, at its option, cancel the unshipped balance of any open order. Interest at the maximum legal rate can be charged on past-due accounts.

5. Shipping and Delivery. Unless otherwise agreed, BH-USA will arrange for shipping of products purchased by the Customer. BH-USA will select the carrier of its choice. BH-USA has no obligation to ship items for overnight, next-day air, second-day air or priority delivery. Customer shall pay all costs of shipping, handling and related charges up-front at the time of purchase.

6. Freight Delivery and Inspection. For large items shipped via third-party freight carrier, BH-USA will notify Customer that items have been shipped. The carrier will arrange for delivery with the Customer, and it is the Customer’s responsibility to cooperate with the carrier to facilitate delivery. If the freight carrier cannot accomplish delivery and the purchased items are returned to BH-USA, then the Customer will be responsible for paying all freight charges as well as a restocking fee equal to 20% of the purchase price for the items shipped. Customer is responsible for inspecting goods immediately upon receipt. If goods shipped via freight carrier are received visibly damaged, written confirmation of the damage should be obtained from the carrier on the freight bill or delivery ticket. An inspection report should be obtained to substantiate the damage claim.

7. Notice of Damaged or Missing Items. For visible defects or damages to products purchased by Customer from BH-USA, or for missing items or components of products purchased by Customer from BH-USA, Customer must provide BH-USA written notice of such defects, damages or missing items or components within ten (10) days after the date of delivery. For hidden defects and/or damages, Customer shall provide BH-USA written notice of such defects and/or damages within three (3) days after the date upon which a diligent purchaser should have discovered the defects and/or damages.

If BH-USA determines that defects or damages to the products occurred during shipping or that items or components are missing from a Customer’s order, then BH-USA will, at its election, either replace or repair the product, or provide a missing part, and ship the repaired or replaced product or missing part to the Customer at no additional charge. Failure to give timely written notice shall release BH-USA from any liability for any such product defects and/or damages or any obligation to repair or replace the product at BH-USA’s expense.

8. Return Policy. Except as otherwise provided herein, if Customer is not satisfied with a product that Customer purchased from BH-USA, then Customer may return the product for a full refund or credit (excluding shipping and handling fees) by notifying BH-USA through its online returns system at www.bh-usa.com/simple-returns/ within thirty (30) days of delivery. It is important that the Customer use BH-USA’s online returns system to process all returns. Any items returned to BH-USA that are not filed through BH-USA’s online returns system will not be accepted or eligible for a refund. Returned items must be in their original packaging and be in the condition in which they were received to be eligible for a full refund. Returned items that are damaged and unsellable are not eligible for a refund. Customer must have a BH-USA order number to complete the returns process and to verify purchase from BH-USA. BH-USA is not responsible for shipping and handling charges for returned items. BH-USA will deduct any shipping and handling charges incurred by BH-USA from the amount refunded or credited to the Customer. Some items, such as special-order and clearance items, cannot be returned for a refund or credit. Return policies applicable to specific items can be found at www.bh-usa.com and are incorporated herein by reference.

9. Warranty Claims for Products Manufactured by BH-USA. BH-USA provides limited warranties for certain products that BH-USA manufactures. Information about these limited warranties can be found on BH-USA’s website and are incorporated herein by reference. If Customer believes a product manufactured by BH-USA is defective and is under warranty, then Customer must promptly notify BH-USA through BH-USA’s online warranty system at www.bh-usa.com/_____. Customer must have a BH-USA order number or a sales receipt confirming that Customer purchased the product. If, upon inspection of the product, BH-USA determines that the product is defective and under warranty, then BH-USA, at its election, will either replace or repair the product at no additional cost to Customer. BH-USA will not issue refunds for warranty claims. BH-USA is not responsible for shipping and handling charges for items returned to BH-USA. Any tampering with, removal of, or covering of any label, serial number, or rating label applied to products manufactured by BH-USA will void all warranties without exception.

10. Disclaimer of Warranties. Except for the limited express warranties applicable to certain products manufactured by BH-USA, BH-USA MAKES NO WARRANTIES REGARDING PRODUCTS OR SERVICES SOLD OR PROVIDED BY BH-USA, AND ALL PRODUCTS ARE SOLD ON AN “AS IS” BASIS. BH-USA EXPRESSLY DISCLAIMS ALL IMPLIED WARRANTIES WITH RESPECT TO ALL PRODUCTS SOLD OR MANUFACTURED BY BH-USA, INCLUDING, BUT NOT LIMITED TO, THOSE OF MERCHANTABILITY AND FITNESS FOR A PARTICULAR PURPOSE. ANY ADVICE OR TECHNICAL GUIDANCE PROVIDED BY BH-USA REGARDING THE USE OF GOODS SOLD BY BH-USA IS FOR INFORMATIONAL PURPOSES ONLY, AND BH-USA MAKES NO REPRESENTATION OR WARRANTY NOR ASSUMES ANY OBLIGATION OR LIABILITY FOR ANY SUCH ADVICE OR TECHNICAL GUIDANCE. Products sold by BH-USA, but not specifically represented to be manufactured by BH-USA, may be covered by a manufacturer’s warranty. Customer should direct all questions regarding warranties for such goods to the manufacturer.

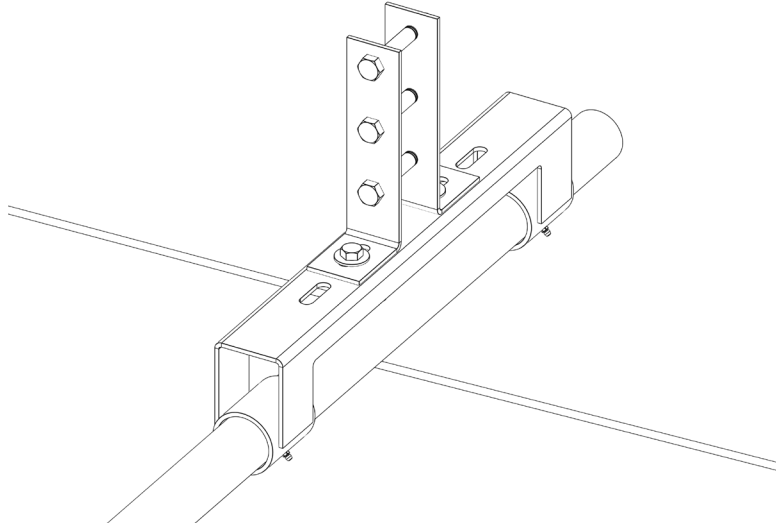
11. Limitation of Liability. CUSTOMER’S EXCLUSIVE REMEDY FOR CLAIMS ARISING FROM OR RELATED TO GOODS SOLD OR MANUFACTURED BY BH-USA IS FOR THE RETURN, REPLACEMENT OR REPAIR OF SUCH GOODS AS PROVIDED FOR AND LIMITED HEREIN. IN NO EVENT SHALL BH-USA’S LIABILITY TO CUSTOMER EXCEED THE AMOUNT PAID BY THE CUSTOMER FOR THE PRODUCT(S) OR SERVICES GIVING RISE TO A CLAIM. BH-USA SHALL NOT BE LIABLE FOR ANY SPECIAL, INDIRECT, INCIDENTAL OR CONSEQUENTIAL DAMAGES (INCLUDING, WITHOUT LIMITATION, PROPERTY DAMAGE, LOSS OF PROFITS, FINANCIAL LOSS, LOSS OF ANTICIPATED

Dual Pipe Support Guide

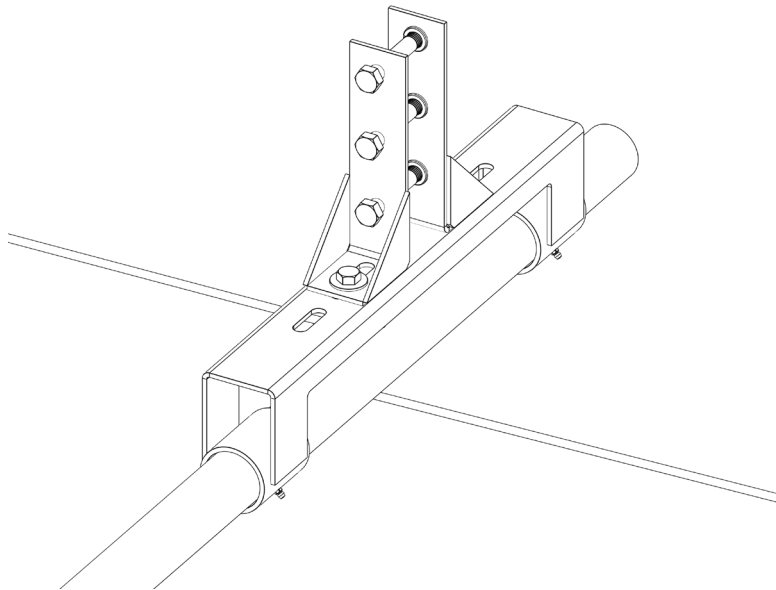
Dual Pipe Support Parts List #33886

What is in the box:

- 2 ea. L-Bracket for wood center mount
 - 2 ea. 1/4" Grease Fittings Press-in
 - 2 ea. 9/16 in. x 1 3/4 in. Galv. Hex Head bolt
 - 2 ea. 9/16 in. Galvanized Steel Nut - 12 Thread
 - 2 ea. 9/16 in. Galvanized Steel Split Lock Washer
 - 4 ea. 9/16 in. Galvanized Steel Flat Washer
-



Standard (36458)



Standard shown with heavy duty brackets (36464)

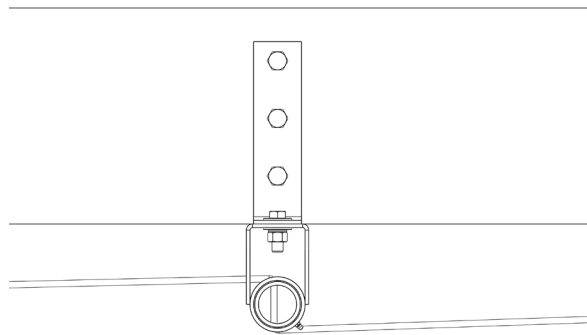
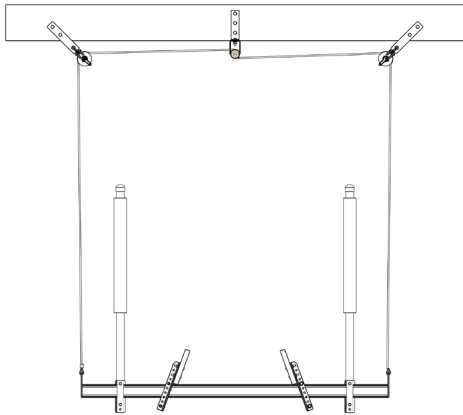
BH-USA® Dual Pipe Support Guide

The BH-USA® Dual Pipe Support is designed to best withstand either balanced side loads or downward vertical loads. The L-brackets come in 2 different configurations: Standard (36458) and Heavy Duty brackets are sold separately (36464)

Mounting the Pipe Support

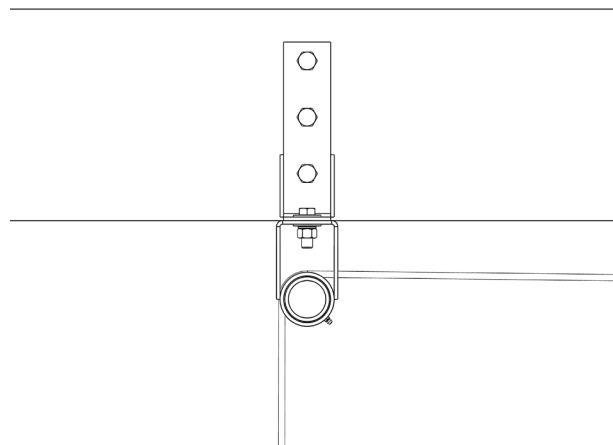
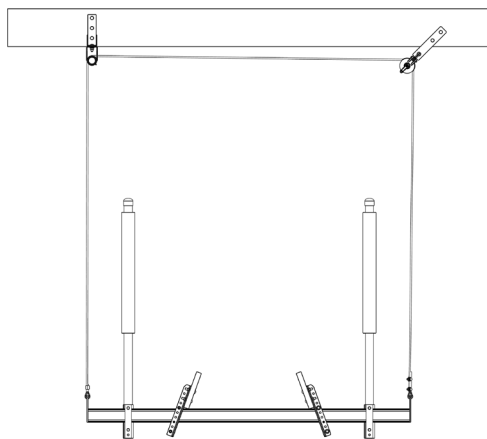
Recommended - Center Mount - Boats up to 8k or 12k compounded

No more than 4,000 lbs per line. This configuration pulls equally in opposite directions canceling out the side load on the Pipe Support. No twisting in relation to the beam should be observed.



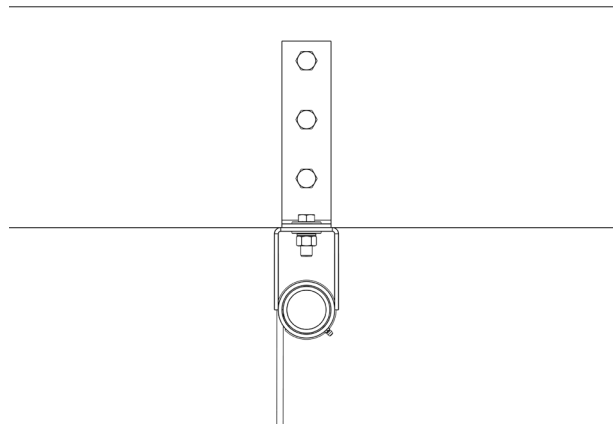
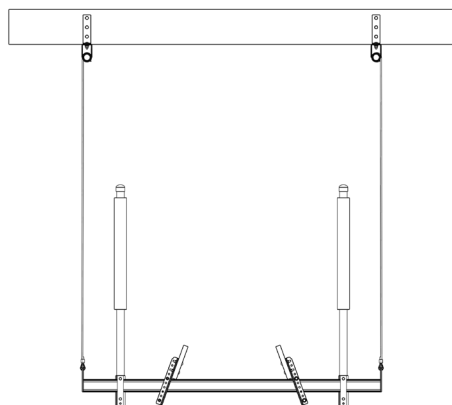
Single Hoist - Side Mount - Boats up to 4 k straight 8K compounded

This mounting configuration results in high side loading and the lift system must be de-rated to no more than 1,000 lbs per line.



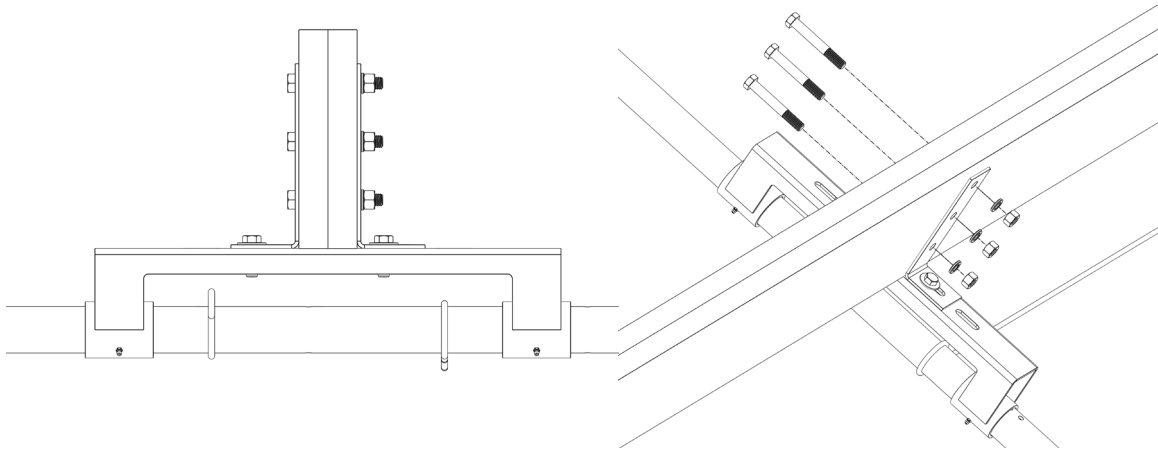
Double Hoists - Boats up to 8K Straight 12K Compounded

With double hoists (drive pipes and hoists on both sides), the pull is straight down on both sides and toward the cradle. Load in each line is limited to 2,000 lbs per line.



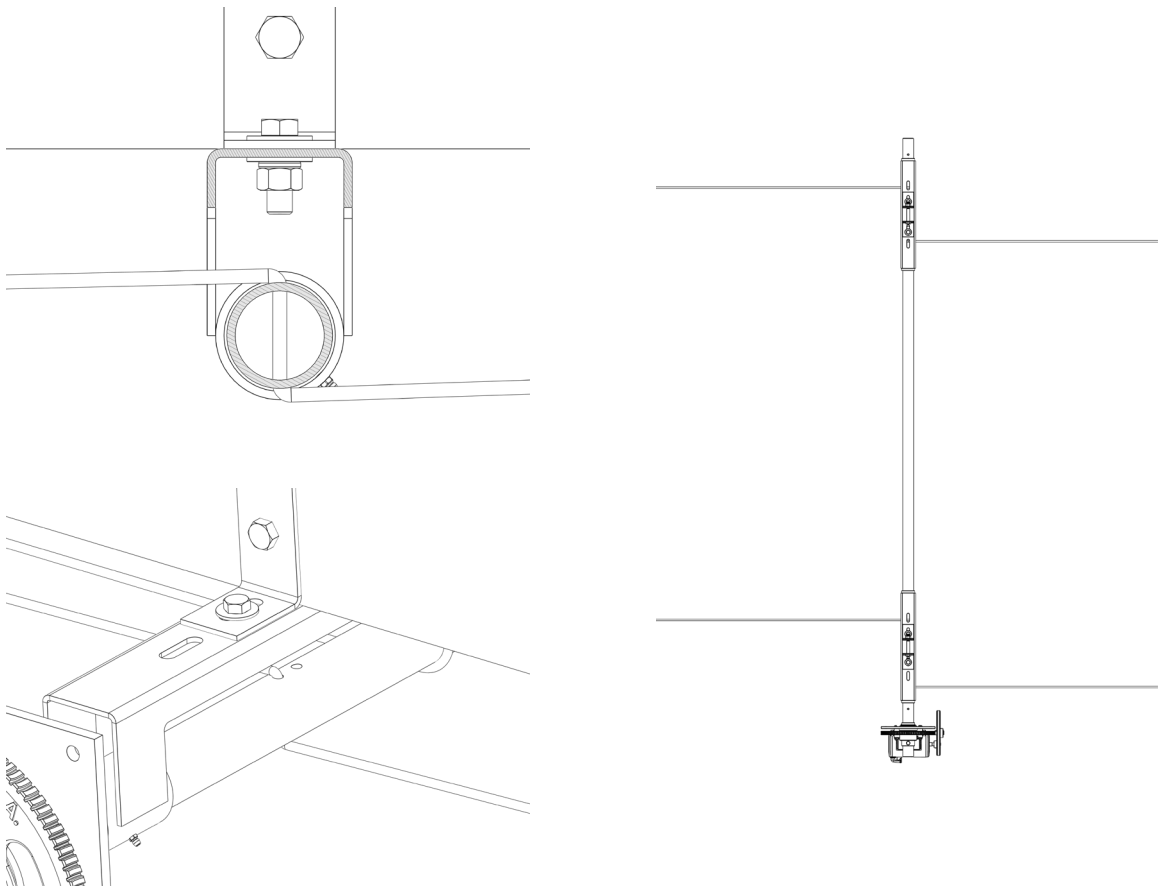
Mounting the Pipe Support

The pipe support should be mounted to dimensional lumber using 9/16" diameter galvanized bolts, lock washers and nuts. The wooden beams should be sized to support the wet weight of the boat (boat, fuel, additional cargo) plus the weight of the boat lift.



Installing the Cable

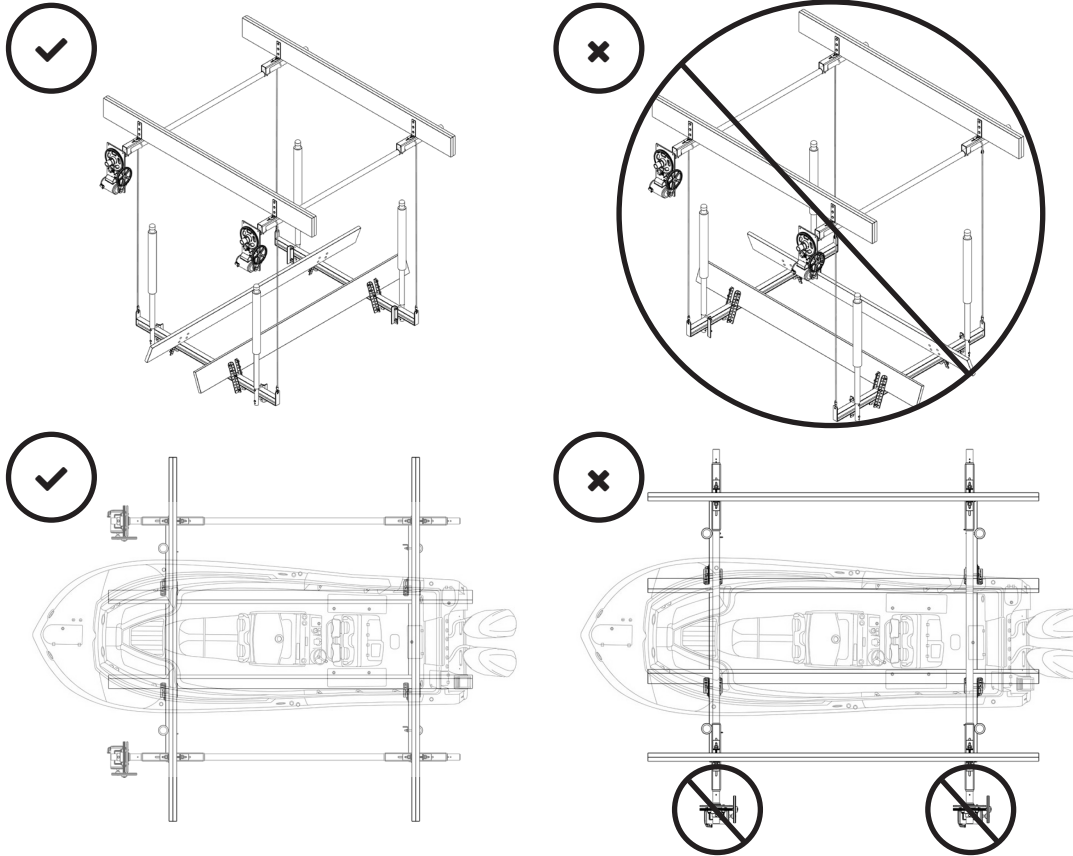
The cable should be installed through the drive pipe as show below and should spool around the drive pipe in such a way as to be the same fore and aft on the drive pipe as shown to reduce the amount of twist in the drive pipe.



Proper Installation

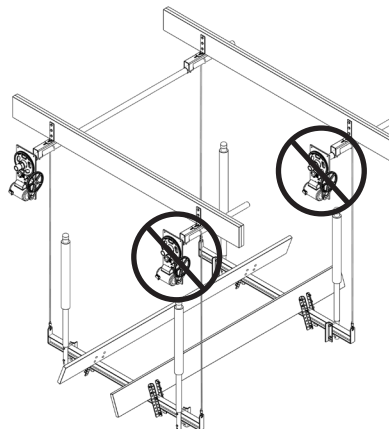
Note: The use of slings will further decrease the rating based on the angle of the wire rope from vertical due to the induced side load. See Wire Rope Technical Guide.

Drive Pipes should always be installed in a direction parallel to the direction of the boat to be lifted.



Never use a hoist on the back of the boat lift or front of the boat lift to lift the boat.

Additionally, drive pipes should never be cut to separate as shown below. Drive pipes should be used with one side lifting the stern of the boat and the other side lifting the bow.



CONTACT US!

 800-259-8715

Monday - Friday
8 AM TO 5 PM CST

WWW.BH-USA.COM



Need a new guide? follow the QR code available it will take you to our technical guides online or visit <https://bh-usa.com/instructions-manuals/>. This guide will help installers and end users determine the size lift and proper cable size for the boats that are being lifted.